



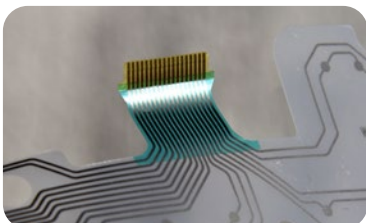
MERCURY DRAWERS

Mercury drawers is the top of the range professional laser system for CO₂ laser cutting

- **Mercury drawers** is a laser system designed for cutting sheets and roll materials. Processable materials are: foils, metal foils, thermoplastic polymers, polyester, conductive polyester, PET/PP, PEI/PS, PEN/PN and FEP.
- Thanks to the drawers, the operator can load and unload the material in masked time: laser never stops processing, productivity is highly increased and production time is almost halved. Operations can be automatic and/or manual, as well as it is possible to interface with automations or robot.
- **Mercury drawers** is a plotter system equipped with linear magnetic motion control and motorized Z axis.
- The CCD Camera allows the registry laser cutting and the automatic files upload.
- **Mercury drawers** has an electrowelded steel frame, which gives strength and solidity.
- **Mercury drawers** is characterized by a wide flexibility of use and high performances: it can reach 2000 mm/s and 2 g acceleration.
- **Mercury drawers** combines the highest accuracy ($\pm 0,05$ mm/m) and repeatability ($\pm 0,01$ mm) to ensure a unique quality.
- Icaro software (CAM) is user-friendly.
- **Mercury drawers** adopts the most advanced Class 1 protection system, such as interlocks and safety laser scanners.



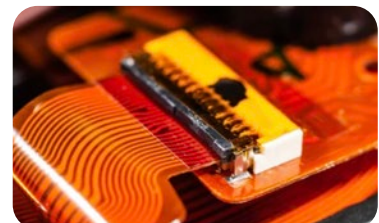
High precision cutting



High quality



High flexibility





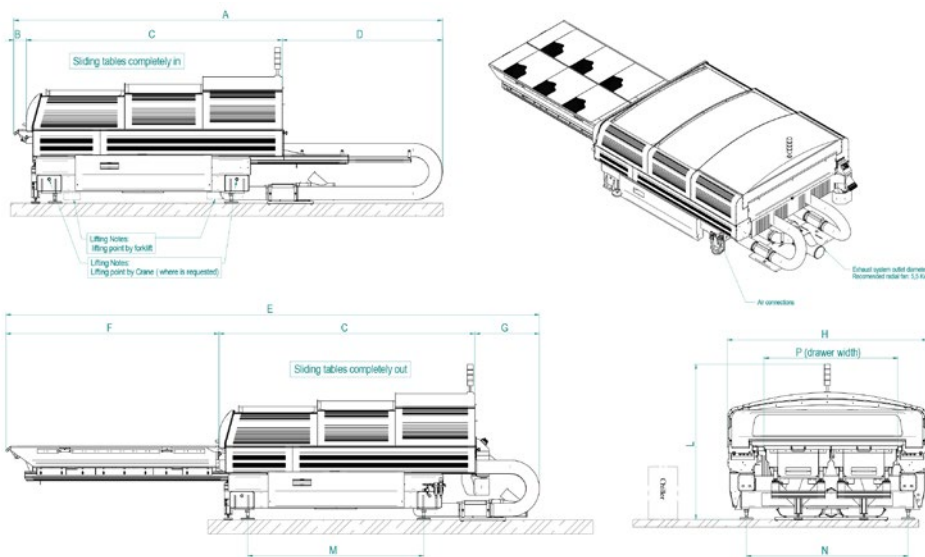
MERCURY DRAWERS

Main technical features:

Available Models	1215	1510	1520	1530	2030
Single drawer working area (mm)	625x1550	750x1000	750x2050	750x3080	1000x3080
Double drawer working area (mm)	1250x1550	1500x1000	1500x2050	1500x3080	2000x3080
Laser power (W)	150-500	150-800	150-800	150-1200	150-1200
Maximum material thickness (mm)	50				
Maximum load (kg/m ²)	40				
Z axis travel (mm)	70				
Accuracy(mm/m)	0,05				
Repeatability (mm)	0,01				
Software interface	CAD/CAM Icaro on Windows™ platform				
Vector images import	.dxf; .plt; .ai; .eps; .pdf;				
Norm compliance	2014/35/EU Low Voltage Directive				
	2006/42/CE Machinery Directive				
	2014/30/EU Electromagnetic Compatibility Directive				
	IEC EN 60825- 1 Laser Safety				

Dimensions and Weight

Available models	1215	1510	1520	2030
Dimensions- AxHxL (mm)	4750x2140x1900	2420x2530x2200	5415x2400x1900	7008x3010x1900
Dimensions ExHxL (mm)	6050x2140x1900	3700x2530x2200	6615x2400x1900	7608x3010x1900
Weight (Kg)	2300	3500	3100	4000



Available options to increase flexibility and automation:

- Metal cutting kit with cutting head H.P. and capacitive sensor
- 3D kit for cutting 3D surface materials
- Class 1 coverage

SEI S.p.A. Via R. Ruffilli, 1 - 24035 Curno (BG) - Italy

T. +39 035 4376016 - F. +39 035 463843 - info@seilaser.com - www.seilaser.com